

HENRIK IBSEN'S A DOLL'S HOUSE



DIRECTED BY MARILYN BENNETT
ADAPTED BY MARILYN BENNETT & LYDIA K. VALENTINE

January 25-February 10, 2019

Fridays & Saturdays 7:30pm

Sundays 2:00pm

Pay What You Can Thursday, February 7th at 7:30pm

TLT 100

Sponsorship provided by:



TACOMA

youth

SYMPHONY

901 Broadway, Suite 500
Tacoma, WA 98402
253-627-2792 www.tysamusic.org

A DOLL'S HOUSE DRINKS \$6.00

A Doll House Daquiri

Nora Helmer likes a classic daquiri almost as much as her macaroons. Rum, Lime juice, and simple syrup shaken, not frozen.

—OR—

Mrs. Linde

Christine likes to take a break and relax with this classic cocktail. Vodka and cranberry over ice.



Do you want to save \$1.00 every time that you order a drink at TLT?

For \$3.00 you can get your very own TLT Sippy Cup and whenever you come back with it, you'll get \$1.00 off any drink.*

*excludes water, tea, and coffee



PRE-ORDER YOUR DRINK FOR INTERMISSION!

A DOLL'S HOUSE

by Henrik Ibsen

Original Script Adaptation by Marilyn Bennett & Lydia K. Valentine

TACOMA LITTLE THEATRE STAFF

Managing Artistic Director Chris Serface
Office Manager..... Karen Christensen
Technical Director..... Blake R. York
Lead Carpenter Frank Roberts
Education/Production Manager Nena Curley
Development Director Diana George
House Managers Ron Bauer, Russ Coffey, Lee Ryan Coston
Bill Loughridge, Brynn & Steven Walker, Nathaniel Walker
Box Office Interns..... Emma Deloye, Gunnar Johnson
Courtney Rainer & Sarah Dohring



SINCE 1918

210 N I Street
Tacoma, WA 98403
253-272-2281

www.tacomalittletheatre.com

TLT is a proud member of:



DIRECTOR'S NOTE

Nora Helmer has a secret. A BIG secret. She has taken an enormous risk on behalf of her husband, Torvald, without his knowledge, and without truly understanding the gravity of her action. The reason she has kept it so close has everything to do with maintaining her role as the delicate doll in Torvald's bell jar of a home. Her sweet, deferential, childlike persona was born of a doting, but ultimately withholding father; she then married and transferred her skills at delighting her Papa to wooing her husband and entertaining both him and their children. All feels bright in the Helmer home until Nora's secret suddenly teeters on the brink of exposure.

Nora's three-day journey of transformation is to me the most challenging, heart-breaking, and valiant element in *A Doll's House*. Our superb company embraced this sharp trajectory of action and revelation with such energy and deep immersion; every rehearsal was a conversation and workshop in the tension between characters expressing and withholding information, affection, trust. The actors, including our remarkable children, all participated in structuring and defining our treatment.

In truth, I tend to side with the argument made by some scholars/linguists that a more accurate translation of the title is *A Doll House*. The societal structure and lack of agency for a woman and wife at the time creates a household in which Nora is mostly decorative, has little influence, and cannot reveal her quite heroic nine-year deed for fear of up-ending the entire façade on which her marriage to Torvald Helmer is largely based.

Our journey with this script has been particularly exciting in two broad areas. First, Lydia and I, after finding a script that encouraged edits and adapting, determined we could create a more crisp, contemporary, passionate, and resonant treatment than we had found in any one English language version of the play. So, for two months, we traversed the language of five versions of the script, spoke it out loud, read our edits to one another, and ultimately pared a three-act play which seems to have little trust that actors can reveal content through means other than speaking, into a two-act play which gives the characters and actors more room to interpret, emote, and react.

Second, our acting company absolutely embraced this journey, participating in discussions of and subsequent edits to our adaptation. In fact, the script was a living document until two weeks before opening night. We have been so moved by the issues and messages of the play, and are struck by its new relevance, as our country and the world look with fresh eyes on the issues of agency and actualization for women: in our personal lives, our marriages, and our need to express our utility, strength, and self-love, in addition to our deep love of those we cherish.

Thank you for choosing to see *A Doll's House*. It has been a magnificent journey.

Marilyn

ARTISTIC STAFF

Director	Marilyn Bennett
Assistant Director/Dramaturg	Lydia K. Valentine
Stage Manager.....	Dana Galagan
Assistant Stage Manager.....	Alyshia Collins
Technical Director/Set Design.....	Blake R. York
Resident Costume Designer.....	Michele Graves
Resident Lighting Designer.....	Niclas Olson
Resident Properties/Hair & Make-up	Jeffery Weaver
Resident Scenic Artist.....	Jen York
Sound Designer	Dylan Twiner
Master Carpenter.....	Blake R. York
Lead Carpenter	Frank Roberts
Assistant Dramaturg/Production Assistant.....	Jack Aldisert
Fight Choreographer	Chevi Chung
Fight Captains.....	Kristen Moriarty & Mark Peterson
Photography.....	Dennis K Photography
Graphic Design	Blake R. York
Build Crew	Gunnar Johnson
Paint Crew.....	Frank Roberts & Gunnar Johnson



**Please remember to silence your
cell phone and mobile devices.
No texting during the performance.
—Thank you**

STAFF BIOGRAPHIES

Marilyn Bennett (Director/Script Adaptation)

Marilyn received her Ph.D. in Theatre History and Criticism from the University of Washington. She has taught and administered theatre programs across the country, performed on stage and in television in Washington, California, New York, and Virginia, and directed over fifty academic and professional productions. Marilyn co-founded Toy Boat Theatre in Tacoma in 2011; TBT seeks to bring affordable, inspiring theatre to communities less well served. "Theatre is our most vibrant way of sharing our stories and ourselves." Love and thanks to TLT, and, as always, to Peter and Trevor.

Lydia K. Valentine (Assistant Director/Dramaturg/Script Adaptation)

Lydia is a Tacoma writer and educator. She was dramaturg for Toy Boat Theatre and UW-T's *Water by the Spoonful*, *365 Days/365 Plays*, and *Clybourne Park* (for which she was also AD) and is delighted to continue working with Marilyn. She also collaborates with Chevi Chung's empathos company and is proud that their next is a staged reading of her play, *Aliquippa*. Lydia is thankful for love and support from her family and friends.

Dana Galagan (Stage Manager)

Dana is honored to be working with director Marilyn Bennet and her team (Lydia Valentine, Jack Aldisert) on this production. She has previously acted as stage manager here for various productions, but most recently for *Seussical* in December of 2017. Dana is often seen onstage as well as behind the scenes and played Madame Arcati in last season's *Blithe Spirit* here at TLT. She is pleased to have had the privilege of working with this amazingly talented cast and crew. Thank you Dan G. for leaving the porch light on.

Jack Aldisert (Assistant Dramaturg/Production Assistant)

Jack is a theatre student at the University of Puget Sound (UPS). He has previously worked as a dramaturg on Marilyn Bennet's *The Other Country* at the Foss Waterway Seaport in 2017, and Professor Jess K. Smith's *Antigone* at UPS in 2018. He is currently directing Ibsen's *Hedda Gabler* at UPS as part of the Senior Theatre Festival (April 2019). This is his first time working with Tacoma Little Theatre.

Blake R. York (Technical Director/Scenic Designer/Master Carpenter)

Blake has been involved with theatre in the area for the past 14 years. Blake serves as TLT's Technical Director, Set Designer, and Graphic Designer for the season posters. Favorite designs in the area include: *Sleuth*, *Sylvia*, *Scrooge! The Musical*, *A Christmas Story*, *Rabbit Hole*, *Cabaret* (TLT), *Oliver!*, *A Funny Thing....*, *The Lion in Winter* (Lakewood Playhouse), *Tom Sanyer*, *Pippi Longstocking* (TMP), and *The Tempest* (Olympia Little Theatre). He would like to thank his wife Jen, his parents, and friends for everything they have done and continue to do for him.

STAFF BIOGRAPHIES

Frank Roberts (Lead Carpenter)

Frank is excited to continue at TLT as their Lead Carpenter. His work with TLT started as a volunteer during the run of *Gypsy* and he enjoys the dynamic work and communal experience that this fine theatre provides. Thanks to his friends, family, Jill, and all who support local theatre.

Niclas Olson (Resident Lighting Designer)

Niclas is an actor, director, playwright, and designer based in Tacoma. His designs for Tacoma Little Theatre include *Someone Who'll Watch Over Me*, *Little Shop of Horrors*, *Cabaret*, *Dracula*, and *Of Mice and Men*. His work can be seen regularly at Lakewood Playhouse (*The Woman in Black*, *Oliver!*, *Pride and Prejudice*), Dukesbay Productions (*Tea*, *Night of the Iguana*), and New Muses Theatre Company (*Into the Woods*, *Frankenstein*, *Doctor Faustus*). Niclas is the Managing Artistic Director of New Muses Theatre Company and line producer for Open Space for Arts and Community. www.niclasolson.com

Michele Graves (Resident Costume Designer)

As Resident Costume Designer for Tacoma Little Theatre, Michele has the pleasure of designing for a variety of shows be they musicals, comedies, dramas or tragedies. Each genre has afforded her an opportunity to work with talented cast members and production staff. The goal of TLT is to always offer audiences a show of the highest quality. For this, the 100th Season, Michele will be working on beloved shows previously performed on the TLT stage and she hopes to enhance your theater experience by “dressing” the cast in just the right costumes.

Jeffery Weaver (Resident Properties Manager/Wigs & Hair)

Jeffery is pleased to be in his sixth year at Tacoma Little Theatre as the Resident Props and Hair Master. He really values the collaboration he has with the other designers here. It's the teamwork that brings these shows to life and transports the audiences to another time and place. He would like to thank his wonderful husband, Bruce, for the love and support of his passion for theatre. He would also like to mention his little one, Claire, who understands when he's gone. (*see I mentioned you by name, little one*) Sending much love to my rock and b.f.f.f. Ms. Jen~I love you...!

Jen York (Resident Scenic Artist)

Jen has been a part of the local theatre community for over 14 years, serving as director, scenic artist, actor, stage manager, prop master, and youth educator for many of the area's theatres. Her most recent directorial credits include: *Senssical*, *The Underpants*, and *A Christmas Story* at Tacoma Little Theatre and *It's A Wonderful Life* and *Narnia* at the Lakewood Playhouse. She would like to offer love and thanks to her family and friends for their unwavering support of all of her theatrical endeavors- both well planned and hare-brained. -xoxo

STAFF BIOGRAPHIES

Dylan Twiner (Sound Designer)

Dylan is glad to be returning as a designer for *A Doll's House*. He grew up listening to old timey radio plays and has loved collaborative story telling ever since. His previous TLT sound credits include *Macbeth*, *Blithe Spirit*, *Dracula*, and *The Pillowman*. He has also been seen onstage in several productions in the area over the past decade, including with the improvised theatre group Muh Grog Zoo. Thank you for coming to see this show and supporting live theatre.

Nena Curley (Production Manager/Education Director)

Nena is regularly seen as a stage manager here at Tacoma Little Theatre. Past shows include: *Blithe Spirit*, *Of Mice and Men*, *Gypsy* and *Bell, Book and Candle* at Tacoma Little Theatre. When she's not stage manager she is the Education Manager here at Tacoma Little Theatre. Thank you to my parents and Dylan for their love and support.

FROM THE DRAMATURG

When I worked on *A Doll's House* for school in 2018, it struck me that a play written in the late 1870's could feel so cuttingly relevant. Then I discovered the famous quote from Ibsen's notes on an early draft of the play in which he identified its core: "A woman cannot be herself in the society of the present day, which is an exclusively masculine society, with laws framed by men and a judicial system that judges feminine conduct from a masculine point of view."

It is no wonder this play is still so alive: with the possible exception of the word "exclusively," Ibsen's statement holds true. The last time I wrote a note for this show, just over a year ago, there were 84 women in the US House of Representatives and 21 in the Senate: only 19 percent of Congress. Today, after the 2018 mid-term elections, there are 106 in the House and 25 in the Senate: 24 percent of Congress. So yes, despite the historic surge of women lawmakers, we still at the very least live in a society in which the laws are framed by men.

I hope that this production can highlight both what is different now from the time of its writing, and what is the same.

-Jack Aldisert



Proctor Shoe Repair

American Craftsmanship

Henry, Your Neighborhood Cobbler

3817½ N 26th Street

Tacoma, WA 98407 (253) 883-9136

ASSISTANT DIRECTOR'S NOTE

When I first encountered *A Doll's House*, I expected a simple depiction of Victorian era repression: Honor. Duty. Sacrifice. These 19th century ideals are also often seen as essential elements of family, so it's no surprise that they are at the heart of *A Doll's House* with its penetrating view of Nora and Torvald Helmer's home and marriage, and the societal norms that constrain the lives of the characters.

Nora has sacrificed her voice and autonomy for the love of her father and husband. This is only the start of what she relinquishes for the sake of a happy and peaceful life for herself and her family.

Mrs. Linde has also made sacrifices out of love and duty, abandoning a loving relationship to marry someone better able to support her sick mother and younger brothers. After being widowed, though, she returns to work, sacrificing her youth and strength for others to live in comfort.

Anne Marie gives us a glimpse of a woman whose honor is compromised. As a "poor girl who had gotten into trouble," Anne Marie had to sacrifice raising her own child to be a nursemaid and mother-figure for Nora.

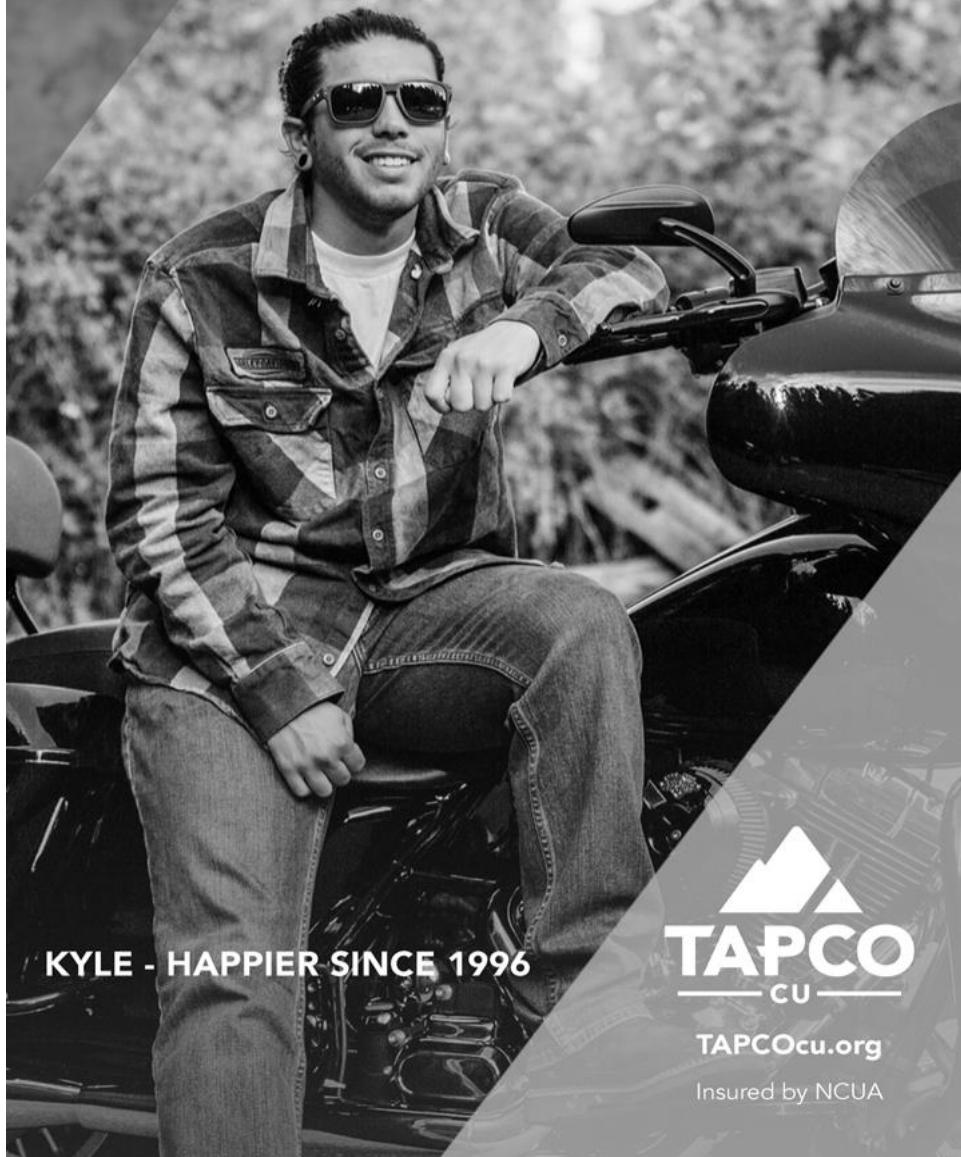
The men of the play certainly have more freedoms and benefits under the patriarchal systems in place, but they, too, are burdened by obligations to duty and honor. Torvald, Krogstad, and Rank are all driven by these forces, and their actions and reactions reveal their inner panic and desperation in varying, nuanced ways that highlight how patriarchal society impacts each of us differently.

Though *A Doll's House* revolves around honor, duty, and sacrifice, what makes it as magical as the "wonderful gift" that Nora anticipates is the way Ibsen uses the lives of his characters to elucidate the norms of the era and, just as cleverly, reject them. The conclusion continues to captivate me to the same degree that it disconcerted and incensed Ibsen's original audiences, whose mass protests led to alternate endings meant to better reflect 'proper' sensibilities. Ibsen, a man dedicated to the idea that one is honor-bound to one's self first and foremost, called this revisionary practice "a barbaric act of violence."

I hope that you'll enjoy our version of his play and its original ending as much as we do and that, like Ibsen, you'll use your voice to promote, celebrate, and recognize the inherent right we all have to be alive and happy and free.

– Lydia K. Valentine

FOR THE LOVE OF HAPPIER BANKING



KYLE - HAPPIER SINCE 1996




TAPCOcu.org

Insured by NCUA

THANK YOU FOR SUPPORTING COMMUNITY THEATRE

Doyle's

PUBLIC  HOUSE

Join us for dinner before or after the show!
We're just on the other side of Wright Park

208 St. Helens Ave South

Tacoma, WA. 98402

253.272.7468

Open 9:00am-2:00am daily



JAY ISELE, BROKER

No Hard Sales! With me you will find an Agent who is committed to helping you achieve your home buying goals, now, and in the future. Whether you are a first time buyer, moving up or downsizing, I will be there to answer your questions and guide you through the entire process and hopefully we will have some fun along the way.

2714 N Proctor St, Suite 103 Tacoma, WA 98407
(253) 223-6025 cell (253) 752-777 office

FROM THE BOARD OF DIRECTORS

The Tacoma Little Theatre Board of Directors is delighted to have you in our audience, and we hope that you are enriched by this live theatre experience. Our Board has several goals for the upcoming year; please let us know if you want to be a part of achieving them!

- Provide greater access, on stage and off, to our community. While we have been known to cast broadly, we've taken it a step further, and our casting notices specify that auditions are open to all racial and ethnic backgrounds unless otherwise specified. We encourage auditions from people of all backgrounds.
- Provide clearer opportunities for volunteerism. We've always relied on our wonderful volunteers for ushering, and ticket taking, and event planning along with other work. We are now strengthening our Board committees and looking for people who are interested in volunteering with us on event planning, fundraising, facilities, and governance. If you have any interest in serving with any of those committees, please let Chris Surface (chris@tacomalittletheatre.com) know.
- Prepare for our upcoming 100th anniversary and begin planning for continued upgrades to our facility.

Tacoma Little Theatre is fortunate to have strong leadership in Chris Surface, and we look forward to continued success with his leadership and our connection to you and the rest of our community.

Enjoy the show!

The Tacoma Little Theatre Board of Directors

NICHOLSON &
ASSOCIATES
INSURANCE LLC

1802 Black Lake Blvd SW #301
Olympia WA, 98512

360-352-8444



Ally Slingerland
ally@nichinsure.com
Ext. 106



Drake Nicholson
drake@nichinsure.com
Ext. 121



Amanda Hinchcliff
amanda@nichinsure.com
Ext. 109

AUTO | HOME | BUSINESS | LIFE



SUPPORT TLT ON SOCIAL MEDIA!

Connect using our Free WiFi

SSID: TLT Guest Password: 100YEARS

*A newborn baby found dead. A naive novice nun.
Was this murder or a miracle?*

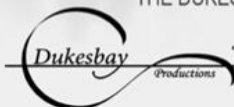
AGNES OF GOD

BY JOHN PIELMEIER

directed by Nyree Martinez

MARCH 1 - 17, 2019

THE DUKESBAY THEATER - 508 6TH AVE. #10 TACOMA, WA



TICKETS \$15 - DUKESBAYAGNES.BROWNPAPERTICKETS.COM

www.Dukesbay.org

GRAB A SEAT AND ENJOY!

Help usher in the next century at Tacoma Little Theatre by creating a more comfortable audience experience in the auditorium.

We've listened to you over the past few years and have made several improvements to the auditorium; from air conditioning, to better house lighting. Now you've told us that it's time for new seats, and we agree. Our current seats are well over 60 years old! That's more than half the time that TLT has been in existence.

In celebration of our 100th Season we are embarking on a campaign to upgrade where you spend the most time: the auditorium. Over the next 18 months we will be raising funds to replace all of the theatre seats, add new carpeting, aisle lighting, create a better section for our patrons with accessibility needs, and change the slope of the theatre so that you can see better.

To do this, we turn to you, our community. You have allowed us to exist for 100 years, we'd like to make the next 100 years more comfortable. To find out how you can seat yourself for the next 100 years, please see any board or staff member during intermission or after the performance.



Kelli Jo Hjalseth

Managing Broker
253.208.9066
kellijo@windermere.com

Sharon Benson

Managing Broker
253.381.7447
sharon@sharonbenson.com

Your Go-To North Tacoma Real Estate Experts



Over 40 Years of Experience
Working with Buyers & Sellers
1500+ Closed Transactions to Date
Vintage Home Specialists
Passionate Client Advocates
Senior & Military Market Specialists

www.kellijoandsharon.com


Windermere
REAL ESTATE


REALTOR®



TACOMA'S
THEATER
ON THE
SQUARE

TACOMA ARTS LIVE

New Name. Same Passion.
Broadway Center is now
Tacoma Arts Live

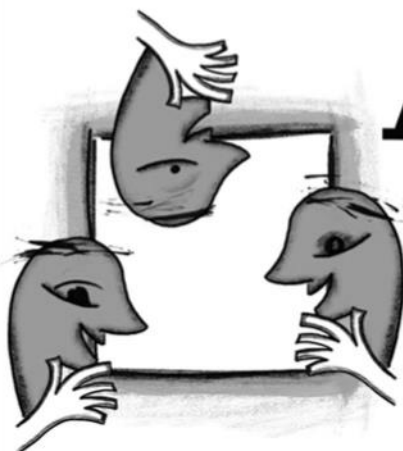
ART

MAY 3-4, 10-11,
17-18 | 7:30 p.m.

MAY 12, 18-19
3:00 p.m.

Tickets start at \$19

TacomaArtsLive.org



ART

By Yasmina Reza,
translated by
Christopher Hampton
Directed by Brett Carr

Starring



ERIC CLAUSELL



DAVID FISCHER



JOSHUA KNUDSON

Three best friends. One painting.

Imagine making a purchase that brings 20 years of friendship to a comical boiling point and fist fight. *Art*, by Yasmina Reza, was a sensational hit in London and New York when it premiered, running more than 600 performances on Broadway and winning the Tony for Best Play. A breathtakingly funny, brilliantly satiric look at status, power, and the dynamics of friendship, including the difficulty of being truly honest, even between people who love each other.

**"The verbal dexterity - is evident.
As is the theatrical aplomb."
— *The Guardian***

SPONSORS



This is the second production from Tacoma Arts Live's new regional theater program. Thank you to our Theater Angels for making this play possible!



The Revolutionists

By Lauren Gunderson

An **OFF THE SHELF** staged reading
Thursday, March 14, 2019 at 7:30pm
FREE for TLT Members
\$10.00 for all others
Directed by Jennifer York

TACOMA
Little
THEATRE

SINCE 1918

210 N I St. Tacoma, WA (253) 272-2281 www.tacomalittletheatre.com



The Pillowman

SPECIAL FESTIVAL PERFORMANCE
SUNDAY, FEBRUARY 24, 2019 AT 7:30PM
ALL SEATS \$10.00

CAST OF CHARACTERS

<i>Nora Helmer</i>	Annie Katica Green
<i>Torvald Helmer, her husband</i>	Sean Neely
<i>Dr. Rank, a family friend</i>	Mark Peterson
<i>Mrs. Christine Linde, an old friend of Nora's</i>	Kristen Moriarty
<i>Nils Krogstad, a bank clerk</i>	Jason Sharp
<i>Ivar, the Helmer's son</i>	Patrick Gow
<i>Bob, the Helmer's son</i>	Nigel Kelley
<i>Emmy, the Helmer's daughter</i>	Jillian Littrell
<i>Anne Marie, the children's nanny</i>	Robin McGee
<i>Helene, the housemaid</i>	Marleyne Hernandez

SYNOPSIS OF SCENES

Time

1885

Place

The Helmer's home in the Norwegian City of Skien, Norway

Act 1

Scene 1: Christmas Eve Day, early afternoon

Scene 2: Christmas Day, mid-afternoon

—INTERMISSION—

Act 2

Scene 1: Christmas Day, the same moment Act 1, Scene 2 ends

Scene 2: The following evening, about 11:00pm

Act 1: 1:04 Act 2: 1:08

CAST BIOGRAPHIES



Patrick Gow (Ivar)

This is Patrick's first mainstage play at TLT and second time working with director, Marilyn Bennett. He was previously seen in *The Other Country* playing a young Henry Foss, son of Thea Foss. He has also starred in numerous musical productions at other local theatre camps and at Sherman Elementary School. Thank you mom and dad for supporting me. Enjoy the show!



Marleyne Hernandez (Helene)

Marleyne is excited to perform at Tacoma Little Theatre. Her theatre credits include Joanne in *Death of Me*, Pozzo in *Waiting for Godot*, Eve in *The Diaries of Adam and Eve*, and Cecily Cardew in *The Importance of Being Earnest*. Marleyne received her B.A. and M.A. in English Literature from St. Mary's University. Marleyne wants to thank her family and friends for supporting even her wildest ventures and for never letting her let her feet touch the ground.



Annie Katica Green (Nora Helmer)

A lifelong lover of complex characters and moving stories, Annie is exhilarated to be in Nora's shoes. Other "top pics" include portrayals of Hester Prynne (*The Scarlet Letter*); Sylvia (*Sybil*); Eliza Doolittle (*My Fair Lady*); Melibea (*The Illusion*), Yvette (*Mother Courage and Her Children*), and the one that started everything: Annie (*Annie*). Directorial favorites include student productions of *Nickel & Dimed*, *Fêtes de la Nuit*, and *House of Bernarda Alba* at Annie Wright Upper School for Girls, where Annie works currently.



Nigel Kelley (Bob)

Nigel (age 11) returns to the TLT stage, where you might remember him from TLT's *Scrooge: The Musical* production last month. Nigel has recently played the titular role in Lakewood Playhouse's *The Velveteen Rabbit*, Michael in Kitsap Theater's *Peter Pan*, and Fighting Prawn in Lakewood Playhouse's *Peter and the Starcatcher*. He hopes that you enjoy the show!!



Jillian Littrell (Emmy)

This is Jillian's first show with TLT. She has danced with Tacoma City Ballet since 2014. Her credits include *The Nutcracker*, *Pinocchio*, *Cinderella*, *Hunted Theatre*, and *Dracula*. She has performed in *Sensical, Jr.* and *Fame, Jr.* with BCPA Conservatory. Jillian launched into community theater in 2017 with *The Other Country*. She is thrilled to be back with Marilyn Bennett as her director and grateful for the entire cast/crew of *A Doll's House* for their patience and encouragement.

CAST BIOGRAPHIES



Robin McGee (Anne Marie)

After a twenty year break; Robin makes her debut and return to the stage at TLT! Her past roles include Addaperle (*The Wizard*), Betsy (*Big River*) which she has performed three times at various community theaters, to Maggie Holmes (*Working!*) During her break she was the front woman for a blues band and recorded her own jazz CD in Los Angeles, and was a part of various V.O. and radio projects in Burbank, CA. Come see Robin become Asaka in Twelfth Night Production's *Once On This Island* this coming February!



Kristen Moriarty (Mrs. Christine Linde)

Kristen is an actress and teaching artist who has worked in theatres and schools in Chicago, Detroit, Montana, Tacoma, the Berkshires, and Athens, Greece. She holds an MFA in acting (University of Montana) and a BFA in acting and dance (Adelphi University, NY). She trains with Shakespeare & Co. (Lenox, MA) and is a contributing artist with Vitalist Theatre (Chicago). Her favorite role to date is that of "Mom." Gratitude to Marilyn, TLT, Team Moriarty, Den, and to you--our audience.



Sean Neely (Torvald Helmer)

Sean is excited to be a part of this production! Favorite roles include: Danny in *Danny in the Deep Blue Sea* (SlimTak Theater Company in Chicago), Nick in *Who's Afraid of Virginia Woolf* (The Jungle Theatre in Minneapolis), and "Man" in *Fruits and Nuts* (Naked Angels in New York). He thanks his junior high theatre teacher David Duvall, for inspiring him to pursue acting in the first place. And most importantly his wife, whom without her love and support he would simply just not be able to act anymore as they both have two very small children.



Mark Peterson (Dr. Rank)

Mark has been performing in the Puget Sound area since 2008 and is happy to be a part of the *A Doll's House* team. Thank you for supporting local art and artists..



Jason Sharp (Nils Krogstad)

Jason is electrified to make his Tacoma Little Theatre debut in this fresh new adaptation of Ibsen's forever-relevant classic! Pacific Northwest Stage Credits include *Clybourne Park* (Toy Boat Theatre/UWT/BCPA), *Cheridonna's Doll's House* (Washington Ensemble Theatre), *Hooded or Being Black For Dummies* (Theatre Battery), *Live! From The Last Night Of My Life* (Theater Schmeater/Theatre22), *Balconies* (Annex Theatre), and TV/Film credits include NBC's GRIMM and Wes Hurley's cult-classic web series Capitol Hill. Love to Jayson & Sterling.

Hilltop Tacoma Link construction begins

Link is coming to the Stadium District and Hilltop!

Construction begins this fall on 2.4 miles of light rail and an expanded operation and maintenance facility on East 25th Street.

Service starts in 2022.



Sign up for project updates at

soundtransit.org/htlink



TACOMA
Little
THEATRE

SINCE 1918

BOARD OF DIRECTORS

President

George McClure, MD

Vice President

Jennifer Niehaus-Rivers

Secretary

Heidi Walworth-Horn

Treasurer

Katherine Davis

Members At Large

Randy Clark

Annie Green

Jenny Hubbard

Donna Knudson

C. Ellen Peters

TACOMA
MUSICAL
PLAYHOUSE
25TH ANNIVERSARY SEASON
Presents
THE MUSIC OF
ANDREW LLOYD
WEBBER
FEBRUARY 1ST - 24TH, 2019
\$31 ADULTS | \$29 STUDENTS/SENIOR/MILITARY | \$22 CHILDREN 12 & UNDER
Music by
ANDREW LLOYD WEBBER
Lyrics by
TIM RICE, DON BLACK, CHRISTOPHER HAMPTON, CHARLES HART,
T.S. ELIOT, BEN ELTON, TREVOR NUNN, GLENN SLATER, JIM STEINMAN,
RICHARD STILGOE, DAVID YAZBEK and DAVID ZIPPEL
2018-2019 SEASON SPONSORS
TACOMA MUSICAL PLAYHOUSE
7116 Sixth Avenue | Tacoma, WA
253-565-6867 | www.tmp.org
HERITAGE
JOHN CANCER
CENTER
SOUND
TACOMAWEEKLY
ARTSUND
Sound Transit
Tacoma Weekly

AN EVENING OF GREAT FOOD, GOOD DRINKS, MYSTERY & MURDER!

Join some of Tacoma's finest actors for an evening of dinner, mystery, and murder!

MURDER



by Merlot

The Frudee Family has been in the wine-making business for years. Their winery, while not entirely successful, has managed to stay afloat despite the criticism of a local wine critic, Dr. William Beabore. But now the Frudee brothers, Doodie and Rudy, and their distant cousin, Judy, have made an amazing discovery, and they know they'll make a big splash with it in the wine world. Doodie's wife, Trudy, will do anything to help her husband, even if it leaves an unpleasant aftertaste, while Rudy's wife, Prudy, doesn't want to stain her reputation with a secret she'd rather keep to herself. Enjoy some wine-tasting and learn a little bit about wine, but be careful, someone will soon be two sheets under!

Directed by Karen Christensen and featuring your favorite local actors!

Social
BAR+GRILL

Presented at and with food by
The Social Bar & Grill
1715 Dock Street

Dinner includes:

Appetizer, Salad, Choice of Main Entrée, & Dessert

Coffee, Tea, Water and Soda included

Alcohol available for purchase at the bar or from server

(Vegetarian/Gluten Free options available) **GRATUITY INCLUDED FOR FOOD**

Thursday-Saturday, February 21-23, 2019 from 7:30-10:00pm

Sunday, February 24, 2019 from 3:00-5:30pm


Ticket prices: \$55.00 includes dinner and show

Call 253.272.2281

or purchase online at tacomalittletheatre.com

TACOMA
Little
THEATRE

SINCE 1918



the Villa

**BED & BREAKFAST
SEE THE SHOW
THEN WALK TO
YOUR BEDROOM!**

10% off any room with your show ticket if reservation is made through our website!

The Villa Bed & Breakfast
705 N 5th Street
Tacoma, WA 98403
253-572-1157
www.villabb.com

the

-DOWNTOWN TACOMA, WA

1. the marketplace or public square of an ancient city, THE CENTER of judicial and
2. business affairs and a place of assembly FOR THE PEOPLE a court or tribunal; the forum of public opinion
3. an assembly MEETING PLACE, television program ect. for the discussion of
PUBLIC INTEREST
4. The forum in the city of Tacoma.

FORUM

Tacoma

eat, meet, and drink

Mon-Thurs, 11:00am-12:00am

Fri - Sat, 11:00am-2:00am

Sunday, 11:30am-12:00am

Located in Downtown Tacoma
815 Pacific Avenue
253.830.2151

Happy Hour Daily
Late Night Fri & Sat

SPECIAL THANKS

Toy Boat Theatre

Pete & Cheryl Burgess

Paul Blanchard

empathos company

Randy Clark

Niclas Olson

Barbara & Don Littrell

Angela & Jim Gow

Natalie & Matthew Kelley

Peter and Trevor

Mary Sudar Appraisals | Estate Sales

1201 Pacific Avenue, Suite 600, Tacoma WA 98402 | 253-759-9440

The Personal Property People

Est. 1984 in Tacoma's Historic North End

*Setting the Standard for Personal Property Appraisal
and Professional Estate Sale Management*

Discovering Treasures - Determining Values

Accredited Senior Appraiser | American Society of Appraisers

www.SudarAppraisals.com



CANYON CREEK

Cabinet Company
*Bringing the Art of
Fine Cabinetry Home*



Melinda Strata

Cabinet Design + Sales

Call for an Appointment

253.752.7000 x 126

melinda@graylumber.com

 **gray lumber company**
A Century of Performance + Integrity

Supporting
**local
arts**
for over a
century



Theater, festivals, galleries, concerts and more . . . community support is NEWSworthy.

Now more than ever The News Tribune is your complete resource for South Sound activities – when and where you want it.

Subscribe today! Call 1.866.754.8808.

THE NEWS TRIBUNE
[thenewstribune.com]

Print + Online + Mobile + Tablet

MG

MC GAVICK GRAVES

ATTORNEYS AT LAW

www.mcgavickgraves.com

Proud
supporter of
Tacoma
Little
Theatre
and their
100th Season

Fri./Sat. at 7PM Sun. at 2PM & 7PM
Tickets: 253-588-0042
www.lakewoodplayhouse.org

ANGELS IN AMERICA

PART ONE AND PART TWO



80 LAKEWOOD PLAYHOUSE

80th Anniversary Season

Brighton Beach Memoirs

September 7 - 30, 2018

*Yes, Virginia, There Is
a Santa Claus*

November 23 - December 16, 2018

*Forbidden Broadway's
Greatest Hits*

January 11 - February 3, 2019

**ANGELS IN AMERICA
PARTS ONE AND TWO**

February 22 - March 17, 2019

Inspecting Carol

April 19 - May 12, 2019

THE PRODUCER

June 7 - July 7, 2019

PLUS: The War of the Worlds Radio Gala,
An Evening with Edgar Allan Poe,
and The Velveteen Rabbit



immedia

Direct Marketing and More.

Design. Print. Mail.

Locally Owned and Operated Since 1979

253.579.1350
www.goimmedia.com

1007 Center Street
Tacoma, WA 98409-8032

Check out the bags in the concession stand!

Great gifts for the theatre lover in your life



Handmade Revivals of Your Favorite Shirts

Etsy - Facebook - Twitter

Melaniegladstone.wix.com/BroadwayBags

Use code: **tacomalittletheatre** for 15% off your order!

TACOMA LITTLE THEATRE'S ANNUAL FUND

Tacoma Little Theatre is a 501(c)(3) organization and survives through the continued support of our community. If you would like to donate, please fill out a form in our lobby or speak with any of our staff. This list is current as of January 22, 2019.

ANGEL (\$5000 and above)

Randy & Aya Clark
Dr. James Laurent
Grace Meikle
Jan Simon

BENEFACTOR (\$1000-\$4999)

Anonymous
Jean Archie
Christine & John Bray
Jack & Billee Brown
Jason & Tanya Carter
Katherine & Michael Davis
Rick & Susan Hornor
Walt Johnson
Dr. James Laurent
Nancy & Emery Lehman
Joe & Doris Leister
Justin & Genevieve Long
Sharry O'Hare & Micheal O'Hara
Ed & Jane Richards
Carol Richmond
Catherine Schrup & Alan Stay
Rebecca Serface & Ted Sandquist
David R. & Kathryn E. Smith
Lynn & Kathleen Sommers
Heidi Walworth-Horn & Joe Horn

PLAYWRIGHT (\$500-\$999)

Ralph & Linda Drews
Bruce Johnston
Marcia & Bill Katica
Edward Klopping III
Libby Lindstrom
Rosalyn & Roger Lueck-Mammen
William & Mary Martin
Maxine Mehlauff
Del Morrill
Ellen Peters & Jeff Soifer
Debra & Michael Pontius
Suzanne Tunney & James DePew

Jodie Zaricor & Martin Goldsmith

PRODUCER (\$250-\$499)

Ben & Marilyn Budde
Brian & Johanna Cox
George & Laura Edman
David Fischer
Laura Giddings & Chuck Schilling
Annie & Brian Green
Sally Jacky
Rob & Rhoni Lozier
Bill Markley & Carol Santos-Markley
Gayle Matthews
George & Helen McClure
Cynthia Netzer
Noelle Nicholson
Casi & Spencer Pruitt
Michael & Susan Sandner
John & Candace Sheehan
Marcia & Timothy Sherry
Neil & Olga Smith
Ron & Beth Stone
Marcia & Leon Titus
Ehregard Ward

DIRECTOR (\$100-\$249)

Walter Ahnert
Margaret & Bob Alston
Tom Birkeland
Thomas & Kelly Borgford
Rod & Barbara Boyd
Kathy & Glyn Brock
Scott Brown
John Butler
Joyce Carlson
Susan Cates
Donald Chinn
Stan & Beverly Corrington
Ron & Judith Davis
Karen Ekrem
Duncan & Leslie Foley

Dan & Colleen Fowler
Carmen Gadison-Lopez
Jean Garrity
Jack Grah
Francis Greenleaf
Brent & Shannon Hall
Madonna Hanna
Jean Hardwick
Helen Harlow
Jordan & Judy Harris
Brittany Henderson
Susan & Ronald Hunt
Elizabeth Jacobsen
Genie Jefferson & Harold Moss
Carol Kalahan
Ralph Kendall & Carol Wray Sturgill
Thomas & Karen Kenneally
Julianne Klontz & John Hiblar
Kathy Kluska
Nancy Knudsen
Donna Kling Knudson
David & Janice Kresch
Gary & Roberta Larson
Gerald & Joan Larson
Grant & Karen Lau
John Lear & Marisela Fleites-Lear
Linda Lewis
Jeffery Lovely
Carolyn Lowry
Jodie Malone
Jean Mandy
Warren & Susan McCasland
Amy & Nancy McCullough
Mildred McNerthney
Jeannette Mefferd
Jerry Merriman
Dana Messina Galagan & Dan Galagan
Marion Miller
Bliss & Shirley Moore
Lark & Fred Moore
Mike Rivers & Jennifer Niehaus-Rivers
Linda & Jerome Norlander
Janet Olejar
Karyn & Vince Panesko
Lorraine Potter
Syr Beth Puett

Robert & Jacqueline Roper
Troy & Tracy Rowan
David & Gwen Sailer
Judy Schuler
Marguerite Shannon
James & Phyllis Shoemake
Iris & Mark Smith
Lisa Smith
Mary Sudar & William Acker
Debra Tainer & Clara Roser
Steve Tarry
Fran Thomas
Cathy Tollefson
Barbara Turecky
James Tuttle & Ruth Ann Mikels
Jay & Linda Van Nest
Jim Vanderslice
Paula Varner
Elizabeth Verhey
Nathaniel Walker
Terry & Kathy Weaver
Jane Welch
Donna Whitt
Suzy Willhoft
Ronald & Ann Williams
Rosemary & Jim Williams
Robert Williams
Ron & Merle Witter
Karen Wyman

DESIGNER (\$50-\$99)

Mary Adsero
Lynn Arthur
Michele Bazdryev
Michael Bennett
Jim & Shirley Benoit
Jill & Barry Bornstein
Mary T. Brasseur
Michelle Bullinger
Tammy Chapuis
Roger & Elain Croteau
Francis Culp
Anushree Dash
Therese Dowd
Thomas Ebenhoh
Andrew Hackleman

Gaylynn Hamilton
Michael & Barbara Hill
Charles & Diana Hough
Kawika Huston
Elizabeth Jachim
Bill & Kris Johnston
Karen Koch & Thomas Cathcart
Tracy & Richard Ling
Janet Marsh
Eileen McCaffery-Lent
Ann McParlton
Becky Naylor
Peter & Nancy Pagni
Nan Peele
Lorraine Potter
Jean Ramey
Robin Richardson
David & Donnie Rostedt
John Saunders
Ann Smith
Susan & William Smith
Constance Swank
Mary Takla
Kathryn Whittier
Rick Witters
Rachel Young
Edward & Betty Zeiger

COMPANY (\$5-\$49)

Drew & Oneta Amdahl
Don & Lynda Amundson
Eric Anderson
Karyn Baker
George Baker
Peter & Ruth Bartels
Sora Baukol
Dennis Birnel
Perry Blazewicz
Rodman Bolek
Keith & Sarah Boyd
Cheryl Burgess
Ana Bury
Jeanine Cassino
Karen Christensen
Salli Collins
Mary Condeluci

Marguerite Condon
Milt Davidson
Alocasia Ellison
Carol Farer
Cynthia Gilletti
Hiroko Goda
Irene & Peter Haraguchi
Lawrence & Joy Heidal
Konnie & Arnie Heinricy
Karen & Dan Hoffman
Katjarina Hurt
Denise Isom
Don & Dee Johnson
Col William & Carol Kunzman
Anne Kurtis & J. Sovie
Maggie Lartz
Elizabeth (Beth) & Joe Lonergan
Kate & Kevin Mahé
Carlyn Matson
Madelyn & David McDougall
Duke Needham
Mary Oakes
Omicron Chapter 0374
– *In Memory of Gene Longen*
Vanessa Pollock
Sean Raybell
Carol A. Robinson
Christine Rose
Martha Scoville
Maxine Strom
Jan Taylor
Joe Whetung
Joy A. White
Heidi & Jim Wilkerson
Patricia Williams

IN KIND

5th Avenue Theatre
6th Avenue Grocery Outlet
ACT Theatre
Artful Dreamers Studio
Kathleen Banks
Barre 253
Bloedel Reserve
Brassfields Salon & Spa
Brewers Row

Broadway Bags
Broadway Olympia
Kathy Brocato
Children's Museum of Tacoma
Karen Christensen
Cooks Tavern
Dimitirou's Jazz Alley
Doyle's Public House
Edmonds Driftwood Players
Frisko Freeze
Carmen Gadison-Lopez
Glass Works
The Grand Cinema
Gray Lumber
Hands On Children's Museum
Harbor History Museum
Harkness Furniture
Harlequin Productions
Hoodsport Wintery
Joe Horn & Heidi Walworth-Horn
imedia
Ivar's & Kidd Valley Restaurants
John Howie Restaurants
Warren Kerr
Donna Kling Knudson
Lakewold Gardens
Lakewood Racquet Club
Lakewood Playhouse
LeMay America's Car Museum
Kate Mahé
George & Helen McClure
McLendon's Hardware
Museum of Flight
Museum of Glass
Museum of Pop Culture
Jennifer Niehaus-Rivers & Mike Rivers
Sharry O'Hare & Micheal O'Hara
Olympia Symphony
Oregon Shakespeare Festival
Pacific Brewery
Pacific Grill
PetSmart
Rainier Guest Services
Ride the Ducks of Seattle
Seattle Children's Theatre
Seattle Repertory Theatre

Chris Serface
Silver City Restaurant & Ale House
Silverwood Theme Park
Jeff Soifer
Stadium Thriftway
STARStix
Tacoma Art Museum
Tacoma Arts Live
Tacoma Glassblowing Studio
Tacoma News Tribune
Tacoma Opera
Tacoma Rainiers Baseball
Village Theatre
Vino Aquino
Washington State Historical Society
Wolf Haven International

CORPORATE & FOUNDATION SUPPORT

The Aloha Club
Amazon Smile
Artsfund Workplace Giving
Boeing Gift Matching Program
City of Tacoma-Arts Commission
Dimmer Family Foundation
ETCConnect Philanthropy
Fred Meyer Community Rewards
The Gottfried and Mary Fuchs
Foundation
The Florence B. Kilworth Foundation
Edward P. & Juanita J. Miller
Microsoft Gift Matching Program
Network for Good
Puyallup Tribe of Indians
The Greater Tacoma
Community Foundation
The Rotary Club of Tacoma #8
The Seattle Foundation
The Morgan Fund
Thrivent Choice
Washington State Arts Commission

*If you have contributed in the past 18
months and do not see your name, or find
an error with your donation,
please contact us.*

JOIN US FOR A WEEKEND IN THE COUNTRY
ONE OF SONDHEIM'S FINEST

A Little Night Music

MUSIC AND LYRICS BY STEPHEN SONDHEIM

BOOK BY HUGH WHEELER

ORCHESTRATIONS BY JONATHAN TUNICK

SUGGESTED BY A FILM BY INGMAR BERGMAN

ORIGINALLY PRODUCED AND DIRECTED ON BROADWAY BY HAROLD PRINCE

DIRECTED BY JOHN MUNN

"A LITTLE NIGHT MUSIC IS PRESENTED THROUGH SPECIAL ARRANGEMENT WITH MUSIC THEATRE INTERNATIONAL (MTI).
ALL AUTHORIZED PERFORMANCE MATERIALS ARE ALSO SUPPLIED BY MTI. WWW.MTISHOWS.COM"

MAR. 8
THROUGH
MAR. 31
2019

**PAY WHAT YOU CAN
PERFORMANCE**
• THUR MAR. 21 •

Fridays & Saturdays | 7:30 pm
Sundays | 2:00 pm



TACOMA
Little
THEATRE

SINCE 1918

For tickets call 253.272.2281 or visit TacomaLittleTheatre.com

\$27 Adults | \$25 Students/Seniors/Military | \$22 Children 12 & under

210 North I Street, Tacoma, WA 98403